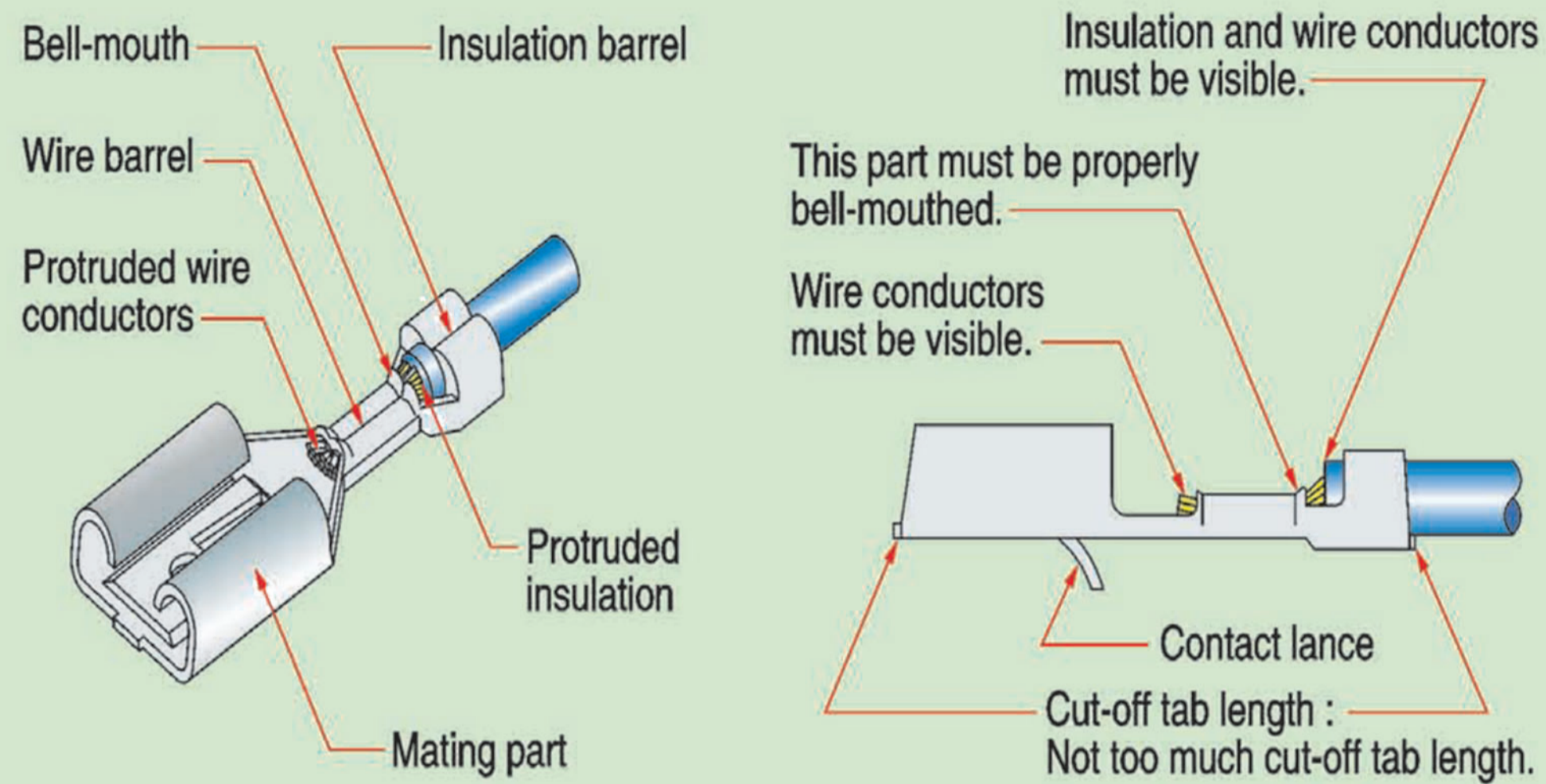


## Correct crimping

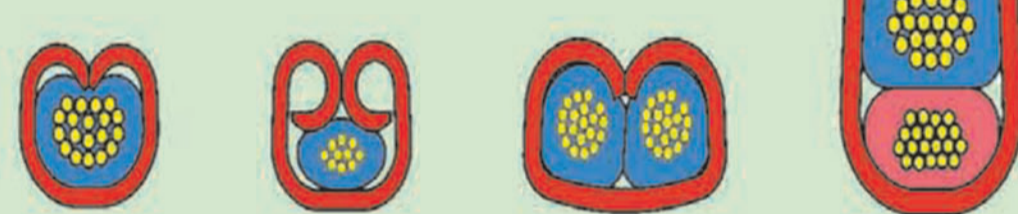


### Cross section at crimped part

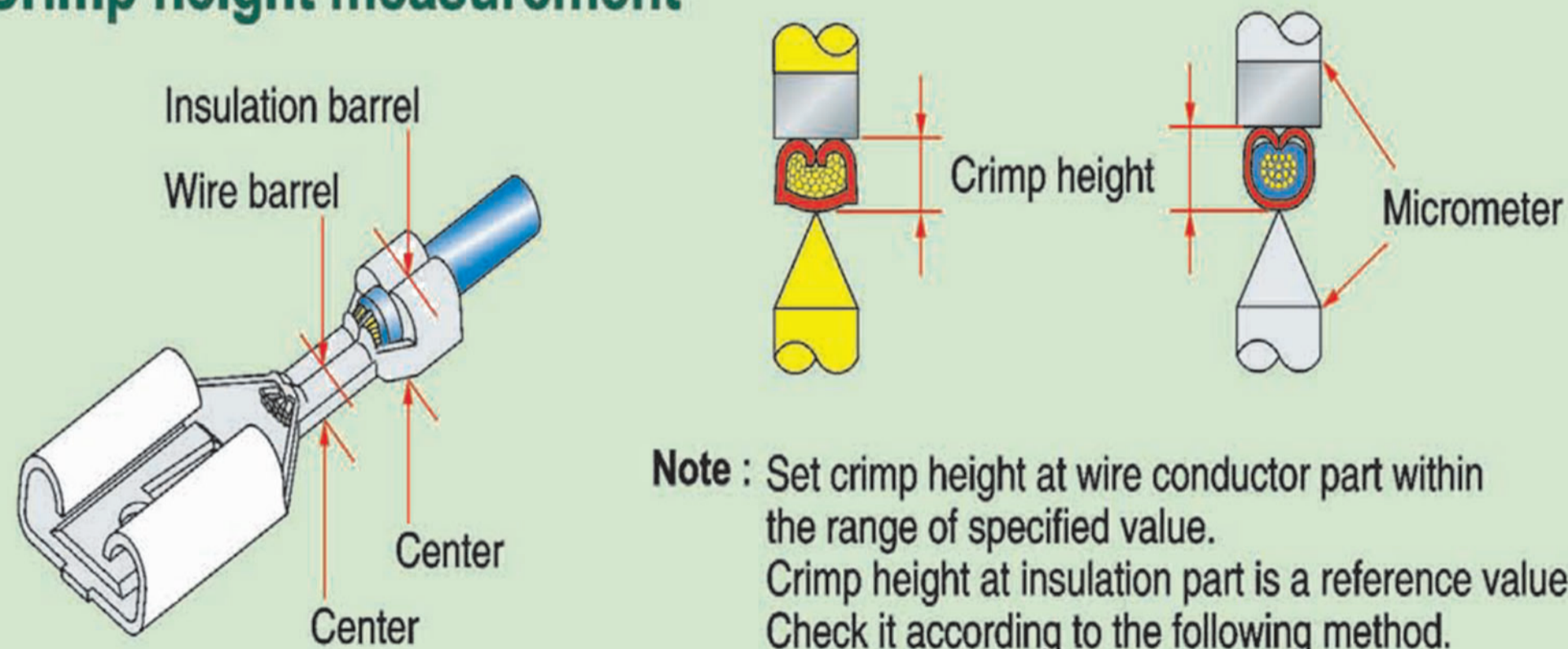
**Wire barrel**  
Seam must be closed.



**Insulation barrel**  
Wire must be securely held.

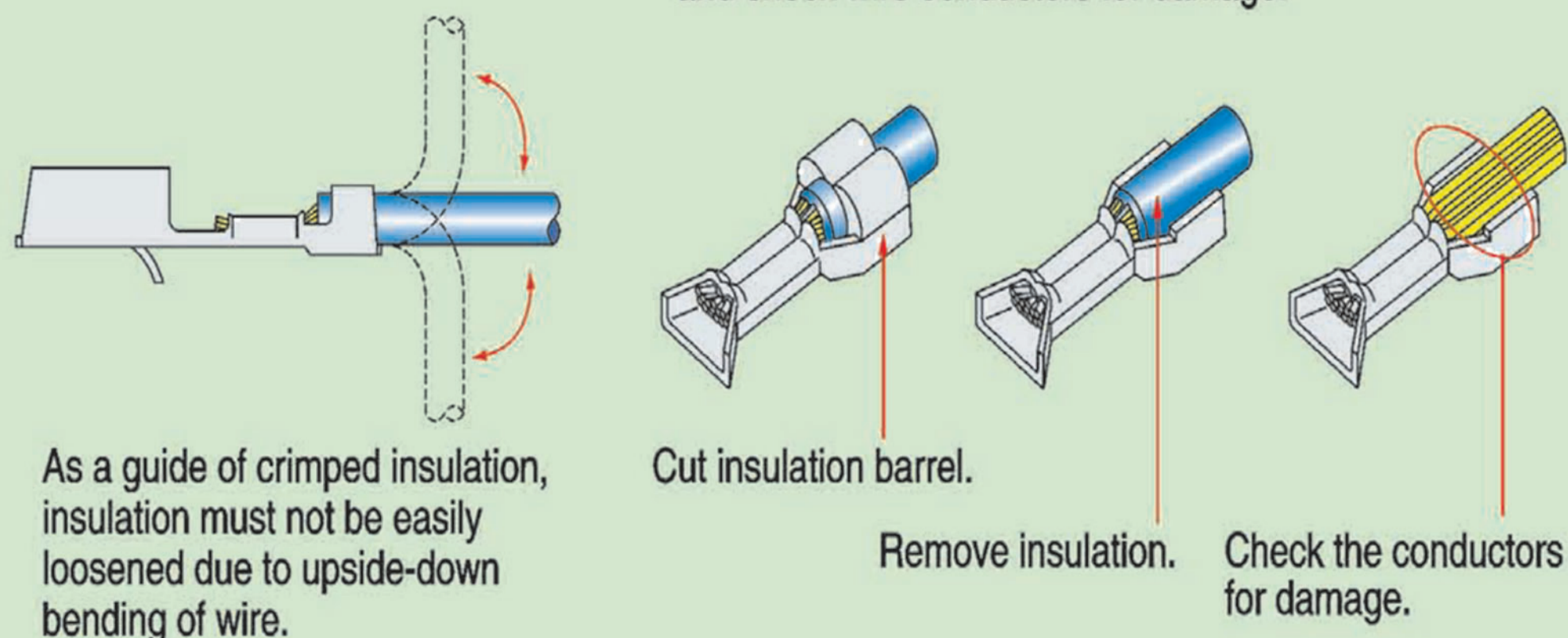


### Crimp height measurement



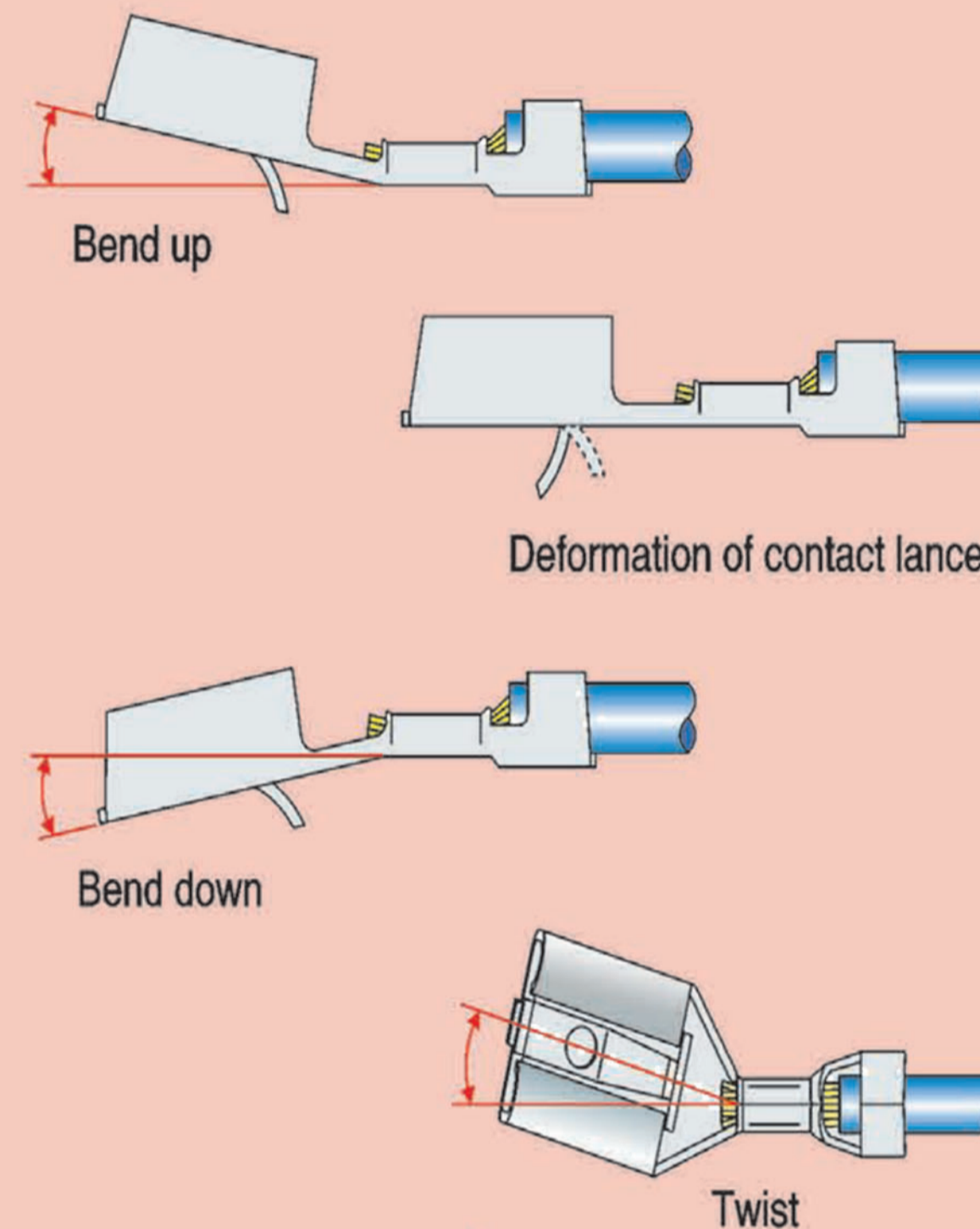
### Check of insulation part

Cut off only wire insulation barrel, remove wire insulation and check wire conductors for damage.

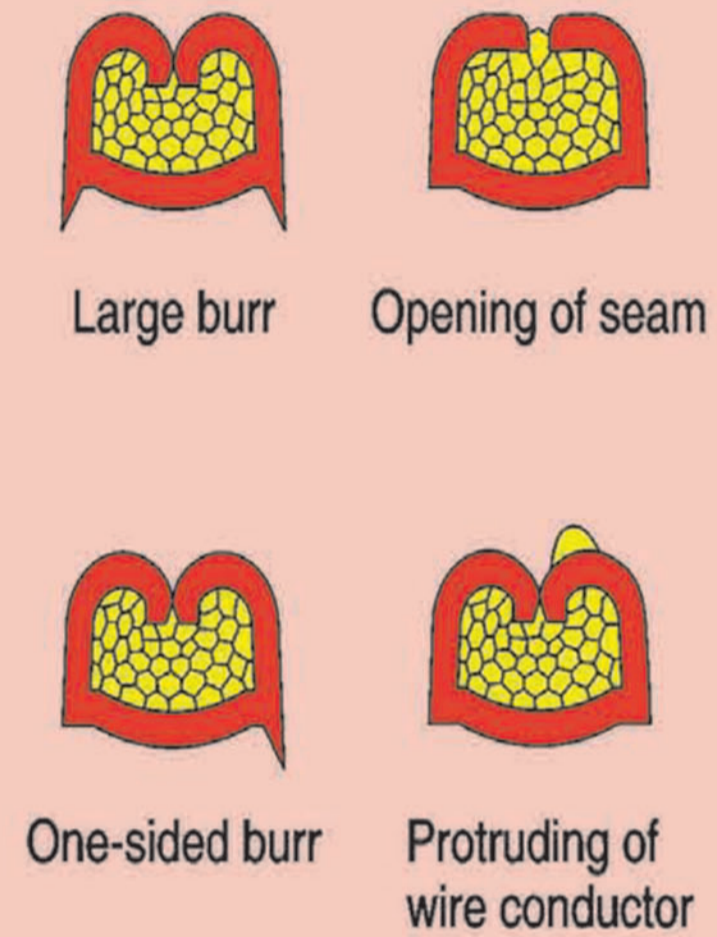


## Incorrect crimping

### Appearance defect



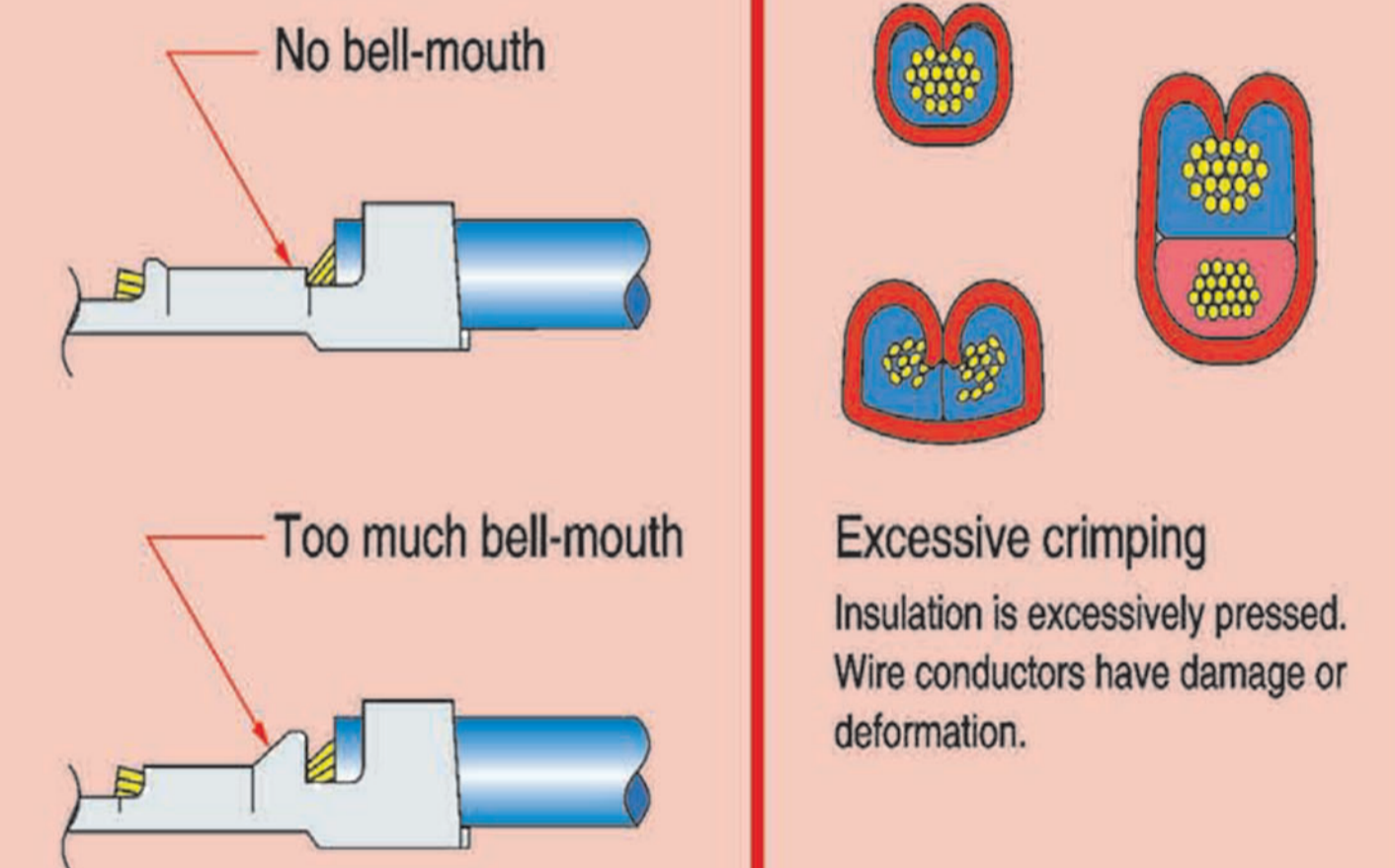
### Cross section at crimped part of wire barrel



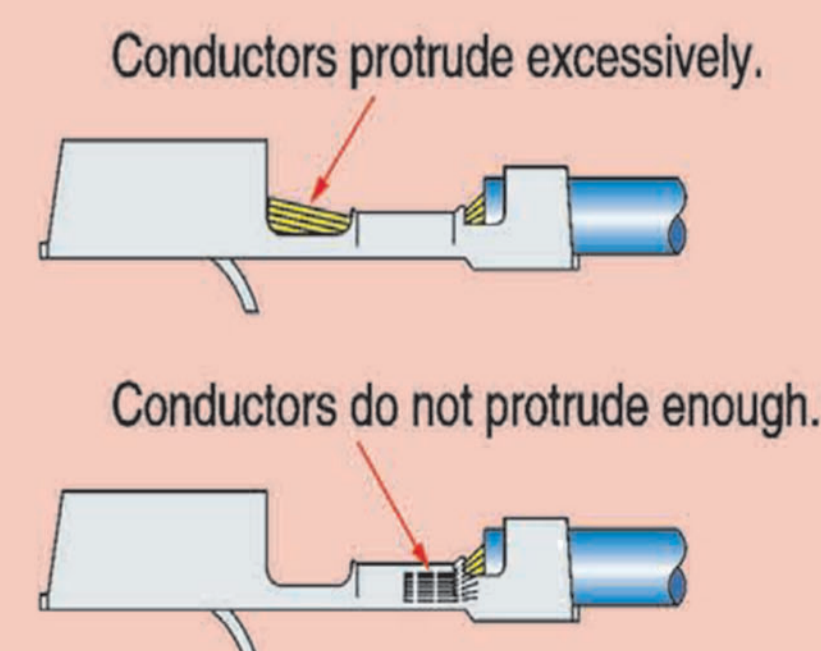
### Cross section at crimped part of insulation barrel



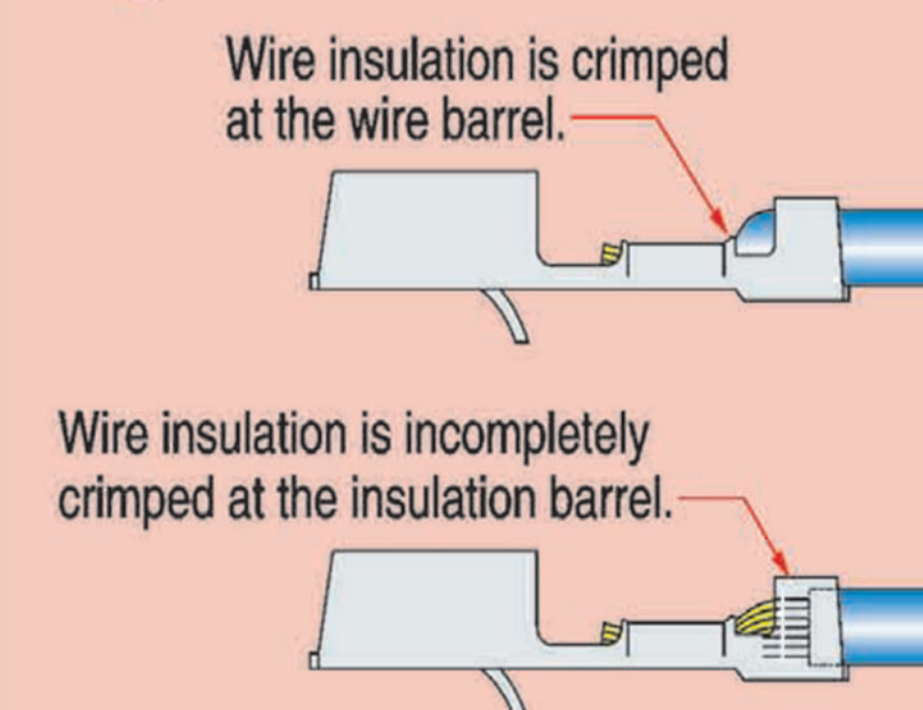
### Bell-mouth



### Wire conductors protruding length



### Wire insulation protruding length



### Cut-off tab length

